



TD-M1-B Sliding Door Lock User Manual



1. Smart Lock Introduction



Product overview: exquisite appearance, reasonable structure, safe and reliable smart fingerprint lock.

Scope of application: broken bridge door, sliding door, translation door, plastic steel door, indoor door, KFC door, etc.

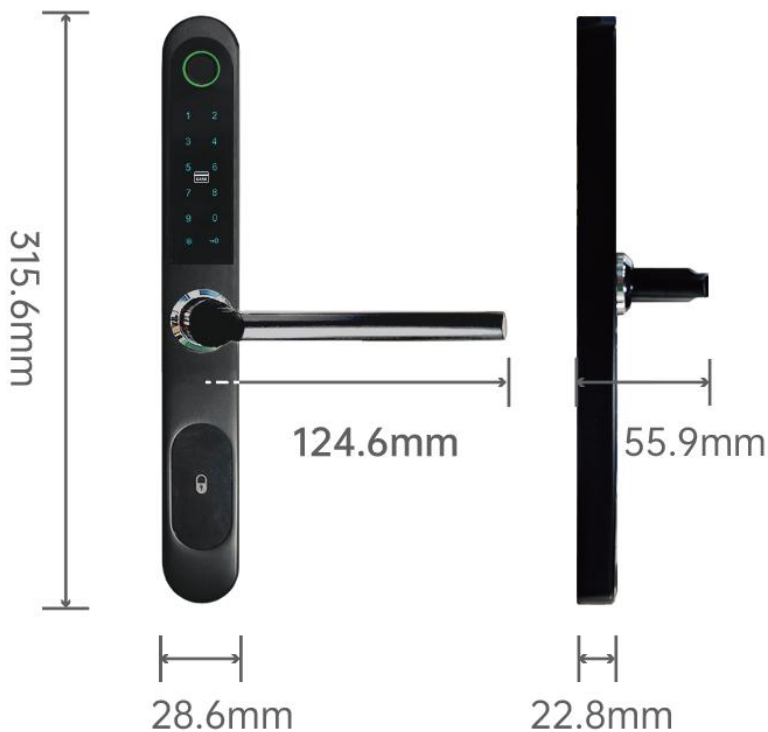
Lock mortise specifications: 2885,3085,3585..., 3585 multi-point and 2885/3585 double hook, etc.

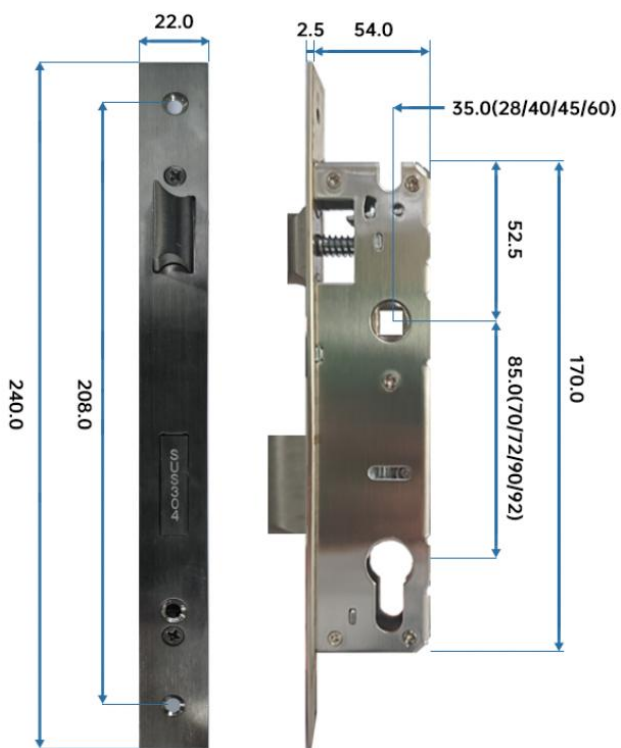
Product features: Adopts international advanced biotechnology to

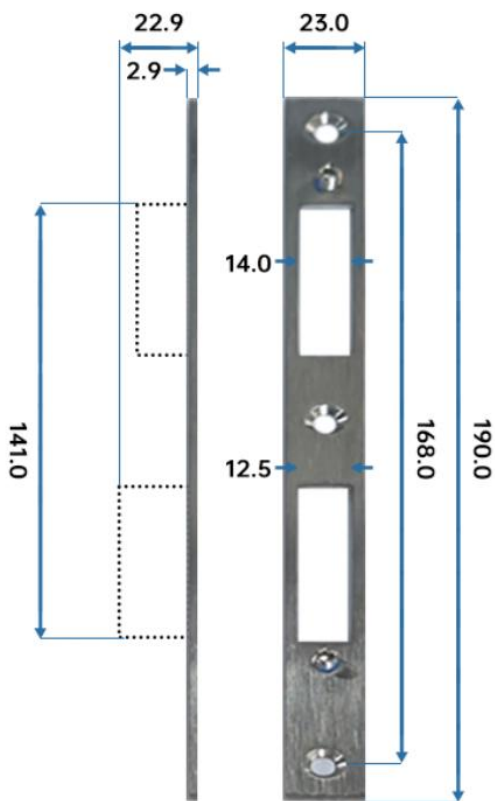
ensure reliable quality; Use 4 * AAA batteries; The handles are designed to protect against violent destruction; 5 options to open the door: fingerprint/password/IC card/mobile phone APP/ mechanical key.

Double-lock function: both the inside and outside handles can be locked, and all the deadbolts can be locked at the same time.

2. Dimensions(mm)







3. Technical Specifications

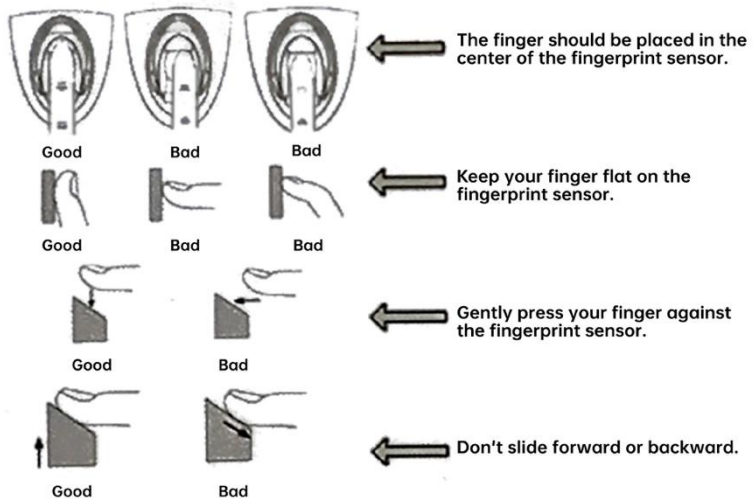
Unlock Methods	Fingerprint, PIN Code, Dynamic Password, Tuya APP, IC Card, Mechanical Key
Sliding Door	Support
Material	Aluminum
Lock Dimension	28.6x315.6x22.8mm
Supported Mortise	2585/2885/3085/3585/4085/4585/5085/6085, 2885/3585 multi-point, 2085/2885/3585 double-hook
Fingerprint Sensor Type	Semiconductor fingerprint sensor
Fingerprint Capacity	100
Password Capacity	100
IC Card Capacity	50
Supported IC Card Type	MIFARE M1 card
False Recognition Rate	< 0.001%
False Rejection Rate	< 1.0%
Supported Phone Systems	Android 5.0 or IOS7.0 and above
Tuya APP Connection	Bluetooth

Bluetooth Standard	Bluetooth 4.2 BLE
Connection Mode	Long connection (keep Bluetooth online)
Bluetooth Gateway	Support
Door Opening Record	Support
Alarm	All kinds of door lock alarm, support background push
Battery	4pcs 1.5V AAA alkaline dry batteries
Low Alarm Voltage	4.6V
Voltage Range	4.5V ~ 9V
Standby Current	50 μ A
Working Current	\leq 200mA
Unlocking Time	\leq 1.5s
Operating Temperature Range	-20 ~ 60 $^{\circ}$ C
Relative Humidity	40% ~ 90% (no gel cream)
Storage Environment	-40 ~ 85 $^{\circ}$ C
ESD(Contact Discharge)	8KV (with lock case)
ESD(Air Discharge)	15KV (with lock case)
Motor Drive	The output voltage is the supply voltage, and the current is \leq 0.6A
Keypad Type	Capacitive touch keypad

4. Operation

4.1 How to place finger

Position your finger on the fingerprint sensor using moderate pressure and ensure it lies as flat as possible. The central part of the fingerprint holds the majority of the pertinent information. Below are figures demonstrating the correct and incorrect ways for finger placement:



4.2 Usage Instructions

Features	Instructions
1. Restore factory setting	<ol style="list-style-type: none">1. Press and hold the reset button on the back lock for 5 seconds2. Wait until the system displays "Initialization Succeeded"3. You can also delete the corresponding lock on the Tuya APP to initialize the system (need to be in the connection state)
2. App download	You can download the Tuya Smart App on Google Play and App Store.
3. App registration and login	App Registration: If you do not have an App account, you can choose to register or log in via SMS verification code. Click "Create a new account" to enter the account registration page. Obtain the SMS verification code and set the password as prompted. If you already have an account, you can click "Log in with an existing account" to log in to the App. Login methods support password, verification code, social media account login.
4. Add locks to the App	Click the "+" icon in the upper right corner of the app home page. Manual addition method: <ol style="list-style-type: none">1. click on the left "security sensing" category2. find the door lock (Bluetooth)3. press the * key in the lower left corner of the key plate to start Bluetooth distribution network

	<p>4. wait for the device to be connected</p> <p>Automatic search method:</p> <p>1.select the Search device page</p> <p>2.press the * key in the lower left corner of the key plate,and the door lock device will be automatically searched in the APP.</p> <p>3.click the link and wait for the device to be connected</p>
1. Bluetooth unlock	Long press the unlock icon in the App to unlock automatically
2. Unlock with fingerprints	Click Settings in the App, fingerprint management, add fingerprints according to the prompts, and then you can use the entered fingerprint to unlock
7. Unlock with passwords	Click Settings in the App, password management, follow the prompts to add the password, and then you can use the entered password to unlock
8. Unlock with IC cards	Click Settings in the APP, key card management, add IC card according to the prompts, and then you can use the added IC card to unlock
9. Presentation mode	Any IC card can be used to unlock when Bluetooth is not bound; The initial password is 123456
10. Normally open mode	The normal mode can be opened after the "automatic lock" is turned off

